



# HICSA

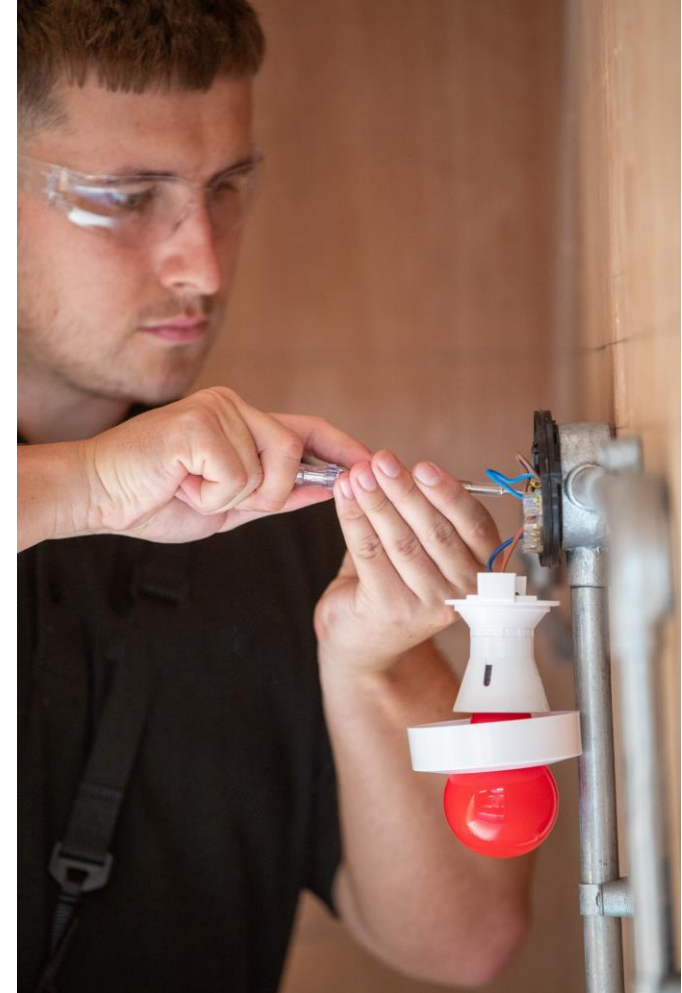
Housing Innovation  
& Construction Skills Academy

Step into the future of  
housing and construction

# Construction Technical Excellence Colleges (CTECs)



- CTECs are one of the measures announced by the Chancellor of the Exchequer in the Spring Statement this year to boost skills in construction.
- A crucial part of delivering on the government's plans to build 1.5 million homes in England this Parliament and progress vital infrastructure projects.
- Government committed £100m over the course of this Parliament to establish 10 CTECs and to expand construction skills provision.
- £80m capital and £20m revenue over 4 years.



# CTEC policy objectives

Achieved by hub and spokes



1. To **boost construction skills** provision in direct response to local and national employer needs (i.e. in alignment with priorities in Skills England construction skills needs assessments and supporting delivery of LSIP priorities).
2. To deliver **high-quality teaching practice and curricula** in construction, including **continuous professional development** for staff with an emphasis on site integration and employer input.
3. To **leverage employer engagement and investment** in construction skills provision.
4. To **collaborate with providers** ('spokes') to boost construction provision and quality both locally and nationally.
5. To **promote clear pathways** for learners to progress into work in the construction industry or into higher level construction courses.



# Hub and Spokes



The CTEC will **collaborate with all providers** delivering construction courses across the region.

The CTEC may evolve working with more closely with some providers, who may represent a specific group of providers, to support in delivering CTEC objectives (A *representative spoke* or *delivery partner*).

Any provider of construction skills can be a spoke or representative spoke.





# HICSA

Housing Innovation  
& Construction Skills Academy



# Scope of regional provision (colleges only)



### Map Key Icons



Hubs



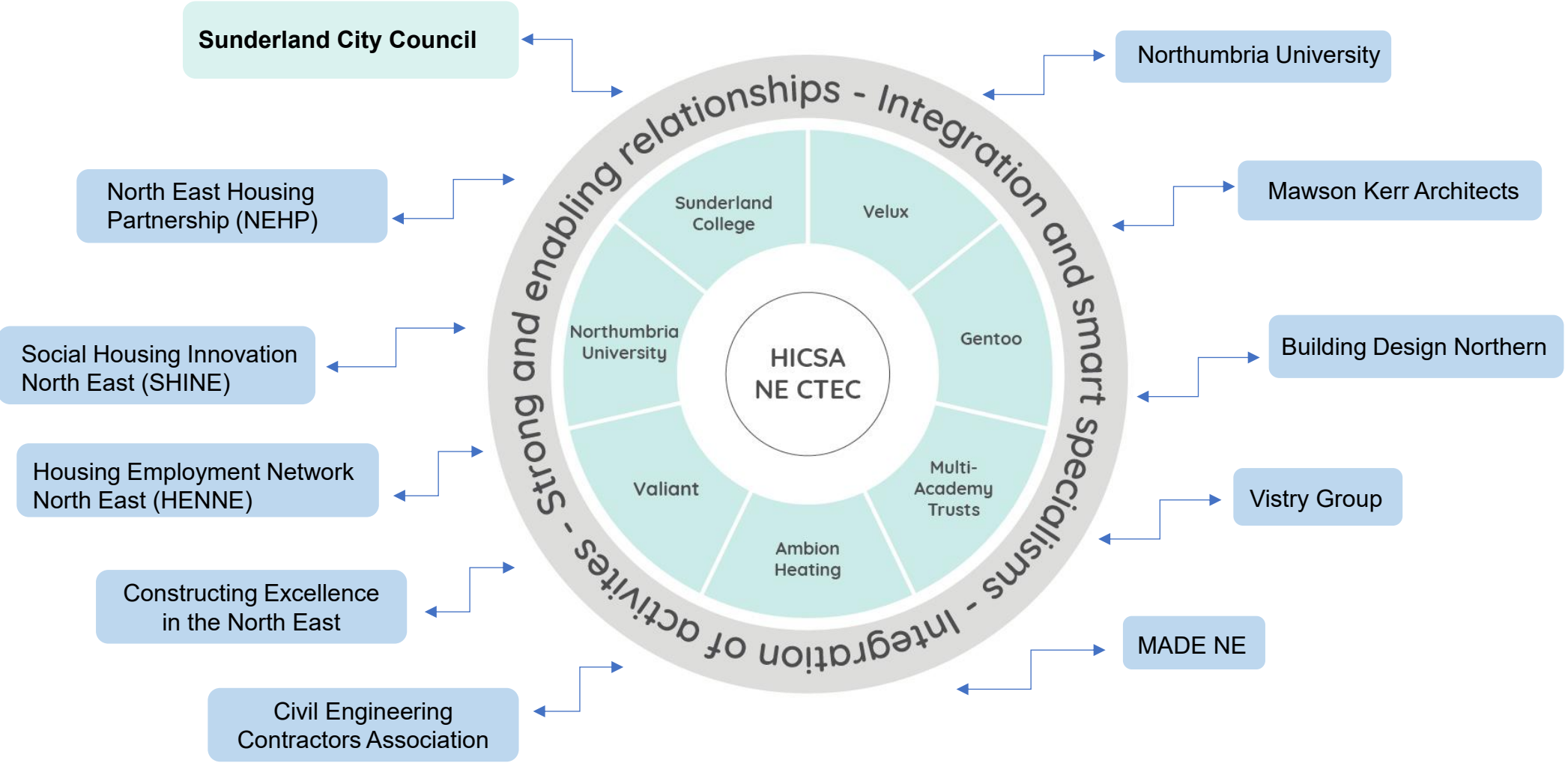
Spokes

### Key facts of the area

- > 2.6m Residents
- > 33k Median Salary
- > 81.3% Working Age
- > 4.4% Unemployed



# Strategic employer stakeholders



# Activity



- **Sprint for Content:** Industry driving curriculum and resource development
- **Sprint for Excellence:** Regional Framework for Construction Quality and Standards
- **Sprint for Exceptional Pedagogy:** CPD for construction and housing educators
- **Sprint for Skills:** Future-Ready Construction Workforce
- **Industry-led Specialist Training:** Train the Trainer Programme
- **Creating Opportunity:** Social Value Leadership in Construction Skills
- **Lean by Design:** Cross-Sector innovation and co-production for Modern Construction



**Rebecca Storey**

Regional Construction Skills Director

North East Construction Technical Excellence College

[Rebecca.storey@northeastctec.co.uk](mailto:Rebecca.storey@northeastctec.co.uk)

